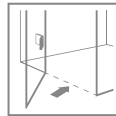
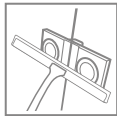
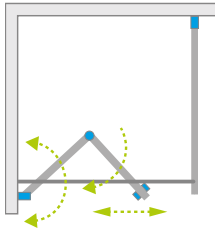


New

Essenza KDJ B



Profile finish:



01 Chrome



There is a possibility to order an additional handle for bi-fold doors. Details on p. 16.

Essenza KDJ B + Kyntos C

Shower enclosure set consists of 2 parts: shower door and sidewall S1. Please specify all the article numbers when making an order.

DOOR

Model	Tray width (A1)	Dimension to the glass panel axis (Y1)	Height (H)	TRANSPARENT GLASS
				Art. No.
KDJ B door 80 L	800	772-782	2020	1385081-01-01L
KDJ B door 80 R	800	772-782	2020	1385081-01-01R
KDJ B door 90 L	900	872-882	2020	1385082-01-01L
KDJ B door 90 R	900	872-882	2020	1385082-01-01R
KDJ B door 100 L	1000	972-982	2020	1385083-01-01L
KDJ B door 100 R	1000	972-982	2020	1385083-01-01R

SIDEWALL S1

Model	Tray width (A2)	Dimension to the glass panel axis (Y2)	Height (H)	TRANSPARENT GLASS
				Art. No.
S1 70	700	667-682	2000	1384048-01-01
S1 75	750	717-732	2000	1384049-01-01
S1 80	800	767-782	2000	1384051-01-01
S1 90	900	867-882	2000	1384050-01-01
S1 100	1000	967-982	2000	1384052-01-01
S1 110	1100	1067-1082	2000	1384053-01-01
S1 120	1200	1167-1182	2000	1384054-01-01

PRACTICAL HANDLES

details on p. 17



Standard



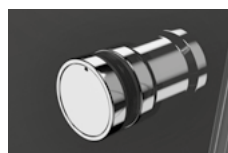
Option

TPE elements in black

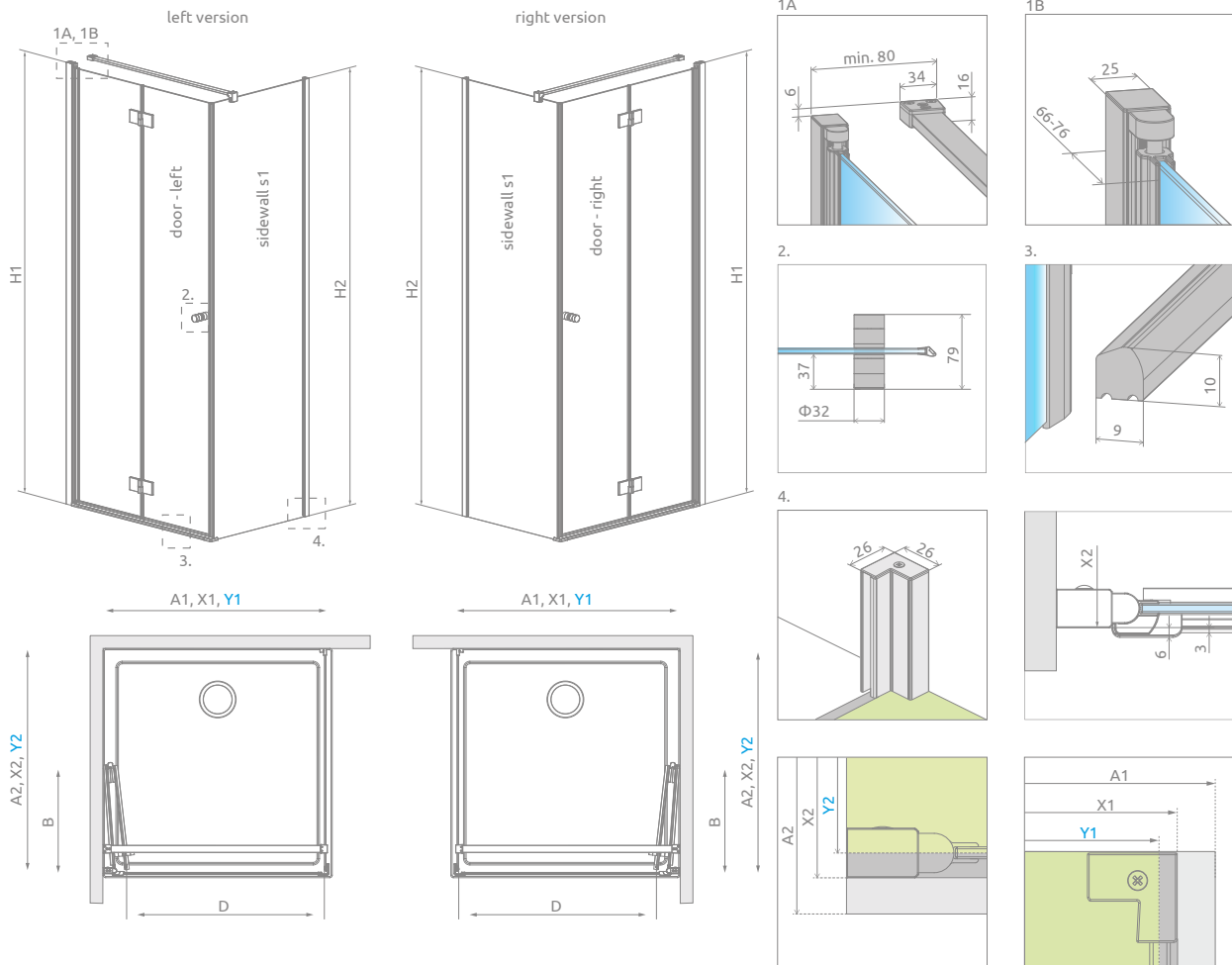
TPE elements in graphite

ADDITIONAL HANDLE

details on p. 16



TECHNICAL DRAWINGS



Door	A1	X1	Y1	B	D	H1
KDJ B 80	800	777-787	772-782	390	645	2020
KDJ B 90	900	877-887	872-882	440	745	2020
KDJ B 100	1000	977-987	972-982	490	845	2020

Sidewall S1	A2	X2	Y2	H2
S1 70	700	680-695	667-682	2000
S1 75	750	730-745	717-732	2000
S1 80	800	780-795	767-782	2000
S1 90	900	880-895	867-882	2000
S1 100	1000	980-995	967-982	2000
S1 110	1100	1080-1095	1067-1082	2000
S1 120	1200	1180-1195	1167-1182	2000

ADDITIONAL OPTIONS



Extension profiles	Art. No.
Profil U +2 cm – it can be mounted only on the side of a profile hinge	P01-137202001
Profil +2 cm – for sidewall S1 only	P01-276200001

NAVIGATION

